

# Cooperative Connections

United States®  
**Census  
2020**

**Census 2020:  
Be Counted.  
It Matters.**

Page 8

**Safety Shines  
at Stock Show**

Page 12

Dan Lindblom

# SDREA's legacy award winner



**Walker Witt**

CEO and General Manager  
wwitt@bhec.coop

**His loyalty to God, family, country, friends, and the co-ops are legendary.**

Last month, your board and I attend a junket in the exotic city of Pierre for the South Dakota Rural Electric Association's Annual Meeting. SDREA's mission is devoted to unifying, promoting and protecting the interests of member electric cooperatives in South Dakota by providing leadership, training, communication, and legislative representation.

SDREA's annual meeting is like many co-op annual meetings with reports on the past year's achievements and what to expect in the upcoming year. SDREA also recognizes individuals for their contribution to electric cooperatives by presenting the SDREA Legacy of Leadership Award. This year, former Black Hills Electric Cooperative director Dan Lindblom was presented the Legacy of Leadership Award at the annual meeting.

Dan was elected to BHEC's board of directors in June of 1983 and served for 27 years before retiring from the board in 2010. Dan was elected an SDREA director by the South Dakota Electric Cooperatives, and served for 18 years on that board, where he was elected president six times.

I had the privilege of sitting as general counsel, at your board table next to Dan, for 12 years. Those were my formative years for developing leadership skills and Dan's impact on my leadership style was and is significant. I learned that it is often more important to listen, than to speak. I learned that it doesn't matter how much one knows or how right your argument is if you don't make the effort and time to build relationships. I witnessed for those 12 years the impact that integrity, commitment, respect, loyalty, humility and kindness have to build consensus and lead an organization.



Dan Lindblom (left) is congratulated by his son, Dave, after being selected for the Legacy of Leadership Award. Photo by Brenda Kleinjan

Dan Hutt, my predecessor, wrote a letter supporting nomination for the Legacy of Leadership Award and summed up Dan Lindblom's contribution aptly, by stating: "Dan Lindblom consistently inspired consensus when there was conflict. His charm and wit disarmed almost every tension. His loyalty to God, family, country, friends, and the co-ops are legendary. When Dan speaks, everyone listens, not just because he tells a good story, but also because he is wise, he tells the truth, and he has earned everyone's respect. He believes that a man's word is good enough, but that if you give your word, you better keep it. He gave co-ops a lot and he never asked anything for it...not even a "thank you". It was just part of being a good neighbor—part of being a real cowboy".

Dan's unwavering commitment and leadership to our co-op, and co-ops across the state benefits all to this day and will for decades to come. If you see Dan, congratulate him on the award and thank him for what he has done.

# Black Hills Electric Cooperative Connections

(ISSN No. 1531-104X)

**Board President:** Alan Bishop

## Board of Directors

Dennis Quivey – Vice President  
 Gary Kluthe – Secretary  
 Don Andersen – Asst. Secretary  
 Jim Preston – Treasurer  
 Al Perry  
 Dave Lindblom

**CEO and General Manager:** Walker Witt – [wwitt@bhec.coop](mailto:wwitt@bhec.coop)

**Manager of Operations –** Bill Brisk – [billb@bhec.coop](mailto:billb@bhec.coop)

**System Coordinator –** Jesse Sorenson – [jsorenson@bhec.coop](mailto:jsorenson@bhec.coop)

**Chief Financial Officer:** Sammi Langendorf – [slang@bhec.coop](mailto:slang@bhec.coop)

**Manager of Marketing and Member Services and Cooperative Connections Editor:** Mike Chase – [mchase@bhec.coop](mailto:mchase@bhec.coop)

BLACK HILLS ELECTRIC COOPERATIVE CONNECTIONS is the monthly publication for the members of Black Hills Electric Cooperative, 25191 Cooperative Way, P.O. Box 792, Custer, S.D. 57730-0792. Families subscribe to Cooperative Connections as part of their electric cooperative membership. Black Hills Electric Cooperative Connections' purpose is to provide reliable, helpful information to electric cooperative members on matters pertaining to their cooperative and living better with electricity. Also available at [www.bhec.coop](http://www.bhec.coop).

This cooperative is an equal opportunity provider, employer and lender. If you wish to file a Civil Rights program complaint of discrimination, complete the USDA Program Discrimination Complaint Form, found on-line at [http://www.ascr.usda.gov/complaint\\_filing\\_cust.html](http://www.ascr.usda.gov/complaint_filing_cust.html), or at any USDA office, or call (866) 632-9992 to request the form. You may also write a letter containing all of the information requested in the form. Send your completed complaint form or letter by mail to U.S. Department of Agriculture, Director, Office of Adjudication, 1400 Independence Ave, S.W., Washington, D.C. 20250-9410, by fax (202 690-7442) or e-mail at [program\\_intake@usda.gov](mailto:program_intake@usda.gov).

Subscription information: Black Hills Electric Cooperative members devote 50 cents from their monthly electric payments for a subscription. Non-member subscriptions are available for \$12 annually. Periodicals Postage Paid at Black Hills Electric Cooperative, 25191 Cooperative Way, Custer, S.D. 57730-0792, and at additional mailing offices.

Postmaster: Please send address changes to Black Hills Electric Cooperative, P.O. Box 792, Custer, S.D. 57730-0792. Address all other correspondence to: Cooperative Connections, P.O. Box 792, Custer, S.D. 57730-0792 Telephone: (605)673-4461; Fax: (605) 673-3147; e-mail: [bhec@bhec.coop](mailto:bhec@bhec.coop); website: [www.bhec.coop](http://www.bhec.coop)

## Visit us at the home show Mar. 27-29



Visit our booth at the 2020 Black Hills Home Builders' Home Show Friday through Sunday, March 27-29. Our booth is in the Rushmore Plaza Civic Center arena. If you are considering building or remodeling, stop at our booth. You can meet with representatives of Black Hills Electric Cooperative and West River Electric Association. We can help you decide on your heating source, your water heater, and other cost saving measures for your new home, including LED lighting.

## Al Perry announces retirement from board

Al Perry, long-time BHEC director from the Johnson Siding area, has announced he will not seek re-election at this year's annual meeting.

Perry was elected to the co-op's board in May of 2006. He served as board president from 2009 to 2012 and as assistant secretary from 2015 through 2018.

He worked for Northwestern Bell Telephone and U. S. West for 33 years, retiring to the Johnson Siding area in 2004. In retirement, Perry worked as a consultant for Golden West Telephone overseeing fiber cable installation in the Buffalo Gap and southern Hills areas.

While a BHEC director, Perry earned his credentialed cooperative director certificate, his board leadership certificate and his director gold certificate, all through the National Rural Electric Cooperative Association.

Perry helped with many of the co-op's area meetings and was well-known for his

love of desserts, often eating more than the other employees combined.

Perry enjoyed representing the cooperative at meetings and he brought a lot of experience and joy to the board room.



Al Perry

## Schedule for Area meetings

### Rockerville

Friday, Feb. 21, 6-7 p.m.

Rockerville Community Hall

Co-sponsor: Rockerville Community Club

### Rochford

Friday, March 27, 6-7 p.m.

Rochford Community Hall

Co-sponsor: Rochford Community Club

# Extension Cord Safety Tips

Not enough cord for your lamp or radio to reach the nearest outlet? Just plowing through the junk drawer for an extension cord? This may not be a good idea. Extension cords can be very helpful in delivering power right where we need it. However, regardless of the gauge or rating of the cord, an extension cord is a temporary solution, and is not meant to be used as a long-term extension of your household's electrical system.

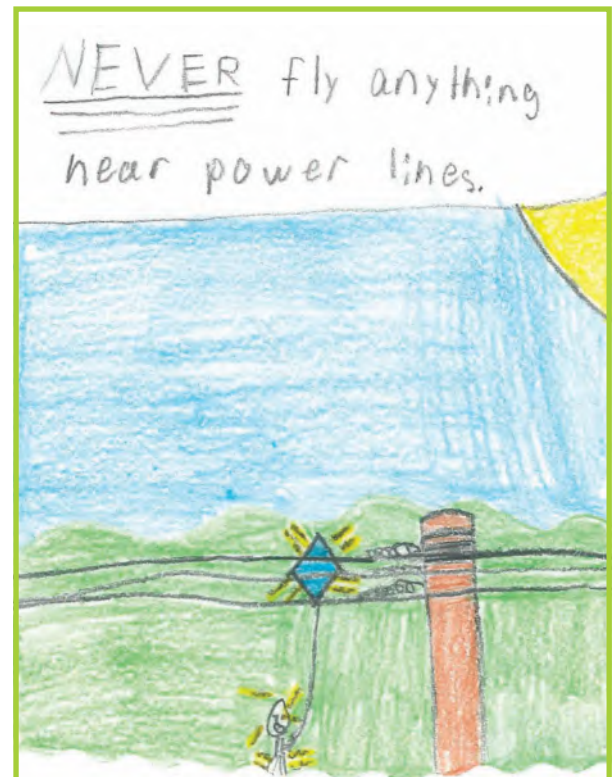
Using extension cords properly is critical to your safety. With continuous use over time, an extension cord can rapidly deteriorate, creating a potentially dangerous electric shock or fire hazard. The Electrical Safety Foundation International (ESFI) offers the following tips for staying safe from electric shock and electrical fires:

- Do not overload extension cords or allow them to run through water or snow on the ground.
- Do not substitute extension cords for permanent wiring.
- Do not run through walls, doorways, ceilings or floors. If cord is covered, heat cannot escape, which may result in a fire hazard.
- Do not use an extension cord for more than one appliance.
- A heavy reliance on extension cords is an indication that you have too few outlets to address your needs. Have additional outlets installed where you need them.
- Multiple plug outlets must be plugged directly into mounted electrical receptacles; they cannot be chained together.
- Make sure the extension cord or temporary power strip you use is rated for the products to be plugged in and is marked for either indoor or outdoor use.
- The appliance or tool that you are using the cord with will have a wattage rating on it. Match this up with your extension cord and do not use a cord that has a lower rating.
- Never use a cord that feels hot or is damaged in any way. Touching even a single exposed strand can give you an electric shock or burn.
- Never use three-prong plugs with outlets that only have two slots for the plug. Do not cut off the ground pin to force a fit. This defeats the purpose of a three-prong plug and could lead to an electrical shock. Never force a plug into an outlet if it doesn't fit.
- Use extension cords with polarized and/or three-prong plugs.
- Buy only cords approved by an independent testing laboratory, such as Underwriters Laboratories (UL), Intertek (ETL) or Canadian Standards Association (CSA).

Source: esfi.org



## KIDS CORNER SAFETY POSTER



**"Never fly anything near power lines."**

**Gage Cumbow, 12 years old**

Gage is the son of Ryan and Kiley Cumbow, Pierre, S.D. They are members of Oahe Electric Cooperative, Blunt, S.D.

Kids, send your drawing with an electrical safety tip to your local electric cooperative (address found on Page 3). If your poster is published, you'll receive a prize. All entries must include your name, age, mailing address and the names of your parents. Colored drawings are encouraged.



# Seafood Sensations

## Hot Crab Dip

- |                                       |                                 |
|---------------------------------------|---------------------------------|
| 1 (8 oz.) pkg. cream cheese, softened | 1/2 tsp. ground mustard         |
| 1 cup mayonnaise                      | 1 lb. lump crabmeat             |
| 2 tsp. OLD BAY® Seasoning             | 1/4 cup shredded Cheddar cheese |

Mix cream cheese, mayonnaise, Old Bay Seasoning and ground mustard in medium bowl until well blended. Add crabmeat; toss gently. Spread in shallow 1-1/2-quart baking dish. Sprinkle with Cheddar cheese and additional Old Bay Seasoning, if desired. Bake at 350°F. for 30 minutes or until hot and bubbly. Serve with assorted crackers or sliced French bread. Makes 28 servings.

*Nutritional Information Per Serving: Calories 110, Total Fat 10g, Cholesterol 30mg, Sodium 181mg, Protein 5g*

**Pictured, Cooperative Connections**

## Seafood Casserole

- |  |                           |
|--|---------------------------|
| 1 (6 oz.) pkg. crab, tuna or salmon, drained | 4 eggs, beaten            |
| 1 cup shredded Cheddar cheese                | 1 cup milk                |
| Onions, chopped                              | Salt and pepper, to taste |
|  | Paprika                   |

Spray an 8x8-inch pan or casserole dish. Combine seafood, cheese and onions. Put in pan. Beat eggs, milk, salt and pepper. Pour over casserole; sprinkle paprika on top. Bake at 350°F. for 30 minutes. Let stand a few minutes before serving.

**Velma Schmitz, Bonesteel, SD**

## Red Salmon Spread

- |                                    |                      |
|------------------------------------|----------------------|
| 1 (14 oz.) can red salmon, drained | 1 tsp. liquid smoke  |
| 6 oz. cream cheese, softened       | 1/2 tsp. garlic salt |
|                                    | Parsley flakes       |

Remove skin and bones from salmon; cut into small chunks. Combine cream cheese, liquid smoke and garlic salt. Add salmon. Shape into 2 or 3 balls. Sprinkle with parsley flakes. Refrigerate. Serve with assorted crackers.

**June Herke, Watertown, SD**

## Crab Lasagna

- |                                      |                             |
|--------------------------------------|-----------------------------|
| 1/4 cup chopped onion                | 12 oz. cottage cheese       |
| 1 stick butter                       | 1 egg                       |
| 1 quart half-and-half                | 1 T. parsley                |
| 1/2 tsp. minced garlic               | 1/2 cup Parmesan cheese     |
| 4 T. cream cheese                    | 12 uncooked lasagna noodles |
| 24 oz. pkg. imitation crab, shredded | 2 cups mozzarella cheese    |

Saute onions in butter. Add half-and-half, garlic and cream cheese. Prepare 9x13-inch pan. Assemble layers as follows: 1 cup sauce, top with lasagna noodles, 1/2 of cottage cheese mixture, 1/2 of crab, 1 cup sauce, lasagna noodles and 1 cup mozzarella cheese. Repeat layers. Cover with foil; refrigerate overnight. Bake at 350°F. for 1 hour. Remove foil and bake an additional 20 minutes until bubbly and cheese starts to brown. Let set 10 minutes before serving.

**Jane Ham, Rapid City, SD**

## Crab or Shrimp Salad

- |  |                                |
|--|--------------------------------|
| 1 (7-oz.) pkg. ring, shell or spiral pasta | 1 cup diced cucumber           |
| 1/2 cup diced celery                       | 1 cup Miracle Whip             |
| 1/4 cup diced onion                        | 1/2 cup Dorothy Lynch dressing |
| 1 (8 oz.) container mock crab or shrimp    | 1/2 tsp. salt                  |
|  | 1/2 tsp. pepper                |

Prepare pasta according to package directions. Toss together celery, onions, crab or shrimp and cucumbers. Add Miracle Whip, dressing, salt and pepper. Chill.

**Joyce Hermans, Milbank, SD**

Please send your favorite appetizer, beverage, casserole or dairy recipes to your local electric cooperative (address found on Page 3).

Each recipe printed will be entered into a drawing for a prize in June 2020. All entries must include your name, mailing address, phone number and co-op name.

# Energy Efficient Landscaping Tips



**Pat Keegan**

Collaborative Efficiency

**The decisions you make about your home's landscaping can help you stay cooler in the summer and warmer in the winter.**

**Dear Pat and Brad:** A friend told us that if our landscaping is done right, it can help lower our home's monthly energy bill. What choices can we make that will reduce our home energy use? – Jason and Kit

**Dear Jason and Kit:** Your friend is right. The decisions you make about your home's landscaping can help you stay cooler in the summer and warmer in the winter. With summer just around the corner, let's start by looking at how strategic planting can help cool your home.

Direct sunlight hitting windows is a major contributor to overheating your home during summer months. By planting trees that block sunlight, you can improve comfort and reduce your air conditioning energy use. If the trees eventually grow tall enough to shield your roof, that's even better.

The most important windows to shade are the ones facing west, followed by windows that face east. Morning and evening sunlight hits the home more directly than mid-day sunlight. Also, an eave on the south side of your home can help shade your windows during mid-day sun.

If you live in a colder climate, planting deciduous trees that lose their leaves in fall will shield your windows in summer and allow sunlight in during winter to help warm your home. A simple approach that can deliver some shade the first year is to plant a "living wall" of vines grown on a trellis next to your home.

One cooling strategy is to make sure your air conditioning compressor has some plants near it. Just make sure the plants aren't too close. The compressor should have a five-foot space above it and a two- to three-foot gap all the way around so that it gets enough air movement to do its job.

There are two other factors to consider that are important in some areas of the country:

- 1) Water is becoming more precious and more expensive. When you pay your water bill, much of that cost is for the energy required to pump water to your home or perhaps you have your own well. Either way, reducing water use saves you money and reduces energy use.
- 2) If you live in an area that has wildfires, you should definitely take that into consideration as you develop a landscaping plan. What and where you plant on your property can either increase or decrease the risk of fire reaching your home.

Now let's talk about how landscaping impacts your home's energy use and comfort in the winter.

If you live in a colder climate, a solid wind break can cut harsh winter winds. The best solution for this is a solid row of trees (preferably evergreen) on the windward side of the home, with shrubs underneath the trees to keep the wind from sneaking through. If you live in a warmer climate, you would not want a wind barrier as wind flow will help cool your home.

If you live in a cooler climate that isn't too humid, planting a row of shrubs a foot from your home can provide more efficiency. By stopping air movement, it can form a dead air space around the home that acts as "bonus" insulation. While you're at it, you could add some foundation insulation if you have a home with a basement or if it's built on a slab. In a humid climate, however, leave several feet of space between landscaping and the home as airflow is necessary to avoid moisture-related home damage.

These are just a few ideas to help you get started. I should also note that as with any landscaping projects that require digging, remember to dial 8-1-1 to ensure all underground utility lines are properly marked and flagged before you start the work. Happy planting!

This column was co-written by Pat Keegan and Brad Thiessen of Collaborative Efficiency.

For more information, please visit: [www.collaborativeefficiency.com/energytips](http://www.collaborativeefficiency.com/energytips).

# Calling All Teachers

Teachers in the region are eligible for a four-day seminar in North Dakota that results in academic credit in their profession. The Lignite Energy Council's Teachers Seminar will be held June 8-11, 2020, in Bismarck, N.D.

Approximately 130 elementary and secondary teachers from Minnesota, Montana, South Dakota and North Dakota will attend the seminar, which was totally revamped in 2009 and made into a two-credit class, which lasts for four days. Participants can receive credit from the University of North Dakota (teaching and learning), North Dakota State University (education) or Minot State University (science).

The seminar, which will be held at Bismarck State College, Bismarck, N.D., will provide teachers with the information and educational materials they need to teach their students about how lignite is mined and used to produce electricity for homes, farms and businesses in the Upper Midwest. In addition, the seminar covers lignite's economic impact on the region, as well as important environmental issues affecting the lignite industry. Since 1986, more than 3,400 teachers have attended the Lignite Energy Council's teacher education seminar.

The teacher education seminar is sponsored by the Lignite Energy Council, in cooperation with Bismarck State College, The Center for Economic Education at the University of North Dakota, North Dakota State University and Minot State University.

During the seminar, teachers hear presentations by educators, researchers and lignite industry representatives. One day is devoted to touring mining operations, reclamation sites and coal conversion facilities. Question-and-answer sessions in the classroom and on the tour give teachers the opportunity to find out what they need to know for their individual classroom needs.

Two graduate professional development credits are available through the Center for Economic Education at the University of North Dakota, Grand Forks, N.D., North Dakota State University, Fargo, N.D., or Minot State University, Minot, N.D. To receive the credits, teachers must attend all portions of the seminar and prepare lesson plans demonstrating how they will use the seminar information and materials in their classrooms.

Teachers attending the seminar will receive lecture outlines on each presentation, examples of lesson plans, classroom exercises, coal and ash samples, audiovisual materials and information on the facilities they tour. In addition, they also receive resource guides listing publications and audiovisual materials available for energy education.

Free lodging is provided in a Bismarck State College residence hall (two people per room). Meals will be provided. Also, transportation will be provided by the Lignite Energy Council for the tour of a mine and power plant.

Visit <https://lignite.com/events/teachers-seminar/> or contact Erin Huntimer at Basin Electric Power Cooperative at 701-223-0441 for more information.



# Governor's Ag Ambassador Nominations Sought

Gov. Kristi Noem is seeking nominations for the 2020 South Dakota Governor's Ag Ambassador Award.

Nominations should be for individuals or organizations who have continually worked to promote agriculture in South Dakota while demonstrating servant leadership, hard work, honesty, humility and respect for others.

## Key achievements of the Ag Ambassador:

- Provides visionary leadership to South Dakota's agricultural industry.
- Champions growth and prosperity of the state's number one industry.
- Advocates for agriculture and the responsible stewardship of livestock and land.
- Highlights the significance of South Dakota agriculture to our global food system.
- Influences decision makers to develop and implement sound agricultural policies.

Nominations are due to the South Dakota Department of Agriculture by May 1, 2020. The form can be found at <http://sdda.sd.gov> under the "Happening Now" section by clicking "2020 Governor's Ag Ambassador Nominations."

The award will be presented during the annual Governor's Agricultural Summit in Sioux Falls July 17-18.

Agriculture is a major contributor to South Dakota's economy, generating \$32.5 billion in annual economic activity and employing over 132,000 South Dakotans. The South Dakota Department of Agriculture's mission is to promote, protect, and preserve South Dakota agriculture for today and tomorrow. Visit them online at [sdda.sd.gov](http://sdda.sd.gov) or find us on Facebook, Instagram and Twitter.



Self-responses to the 2020 census begin March 12 online, by phone or by paper.

# GET COUNTED

## Census 2020 Will Shape Region's Future

**Brenda Kleinjan**

editor@sdrea.coop

Census Day is coming April 1 and a push is being made in March to get people counted.

The census counts people where they are at on April 1, 2020.

The process opens March 12 when people can begin the online completion of the census. Most people will have received an invitation to respond to the census. The form will be mailed to USPS mailable addresses. Hand delivery will take place in cases where addresses are a rural/PO Box or non-USPS household unit. The card will have an address-specific code for responders to use, but they can still go online without the card.

“The goal on March 12 is to have as many people as possible go online and complete the census,” said Rob Timm, partnership specialist with the Dallas Regional Census Office/Field Division, Denver Region U.S. Census Bureau. Timm has been focusing on western South Dakota businesses and government agencies in preparation for Census 2020.

People can also complete the census by phone or complete a paper form.

On May 1, the labor-intensive process of sending enumerators

### The 2020 Census is accessible for everyone.

We're making sure that **however you choose to respond**—online, by phone, or by mail—that **the census is accessible**. You'll receive an invitation to respond **beginning in mid-March**. You choose how you want to respond.



You can respond **online** in English or in 12 additional languages. The online questionnaire is accessible, following the latest web accessibility guidelines. We'll also have a video in **American Sign Language** available to guide you through responding online.



You can respond by **phone** in English or in 12 additional languages. You can also respond in English by **TDD** at 844-467-2020.



By mid-April, we'll mail a **paper questionnaire** to every household that hasn't already responded. (Some households will receive a paper questionnaire along with the first invitation in March.)

We'll have **braille and large print guides** available online to assist you with completing the paper questionnaire.



If necessary, you can respond **in person** beginning in mid-May. Census takers will visit all households that have not yet responded.

We'll have census takers available who can communicate in **American Sign Language** and additional languages. When the census taker visits to help you respond, you can request that another census taker who communicates in American Sign Language returns, if you prefer.

If you prefer, you may also choose to have another member of your household interact with the census taker.

**Responding is important.** A complete count helps ensure that services like Medicare, Medicaid, social security, and public transportation can support those who need them.

**Responding is safe.** All of the information you share with us is protected by law and cannot be used against you.

**Responding is accessible.** We're doing everything we can to ensure the ways to respond are accessible for everyone.

Any questions? Please visit [2020census.gov](https://2020census.gov). This website is 508 compliant and accessible to people of all abilities.

Shape your future  
START HERE >

United States  
Census  
2020



tors door-to-door to count people begins. An estimated 1,200 people will be serving as enumerators through July.

“We know there are tracts with low response areas,” said Timm. Census officials are working to improve those response rates.

Each year, the federal government distributes more than \$675 billion to states and communities based on U.S. Census Bureau data. According to the report, “Counting for Dollars 2020: The Role of the Decennial Census in the Geographic Distribution of Federal Funds” by the GW Institute of Public Policy, South Dakota was allocated more than \$2.3 billion in 2016. This money represented the allocation of funds from 55 large federal spending programs guided by Census 2010 data. Of that \$2.3 billion, nearly one-quarter was for U.S. Department of Agriculture programs while one-third went to U.S. Health and Human Services programs.

## Census Key Dates

**March 12:**  
Self-response begins  
and continues  
through July 2020.

**April 1: Census Day**  
**Dec. 31: Census  
Counts Delivered  
to President**

The report, by Andrew Reamer, a research professor at The George Washington University, noted that census-derived datasets help define eligibility criteria for various programs, compute formulas that geographically allocate funds, rank project applications based on priorities and set interest rates for federal loan programs.

Officials in Sioux Falls estimated that the community missed out on nearly \$1,600 per person for every person missed in the 2010 census.

The value of the census goes beyond dollars.

In Minnesota, the fate of the state’s 8th Congressional District is at stake. The U.S. House of Representatives is based on population. Minnesota currently has eight seats while Nebraska has three and South Dakota and North Dakota have one seat each.


“It’s not going to take a ton of your time and it makes a difference for South Dakota,” said Jake Droge, partnership specialist with the Dallas Regional Census Office/Field Division, Denver Region U.S. Census Bureau. Droge has been working with government agencies and businesses in eastern South Dakota.

## CENSUS 101: WHAT YOU NEED TO KNOW

The 2020 Census is closer than you think!  
Here's a quick refresher of what it is and why it's essential that everyone is counted.


### Everyone counts.

The census counts every person living in the United States once, only once, and in the right place.



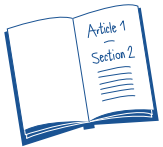
### It's about fair representation.

Every 10 years, the results of the census are used to reapportion the House of Representatives, determining how many seats each state gets.



### It's in the Constitution.


The U.S. Constitution mandates that everyone in the country be counted every 10 years. The first census was in 1790.



### It's about \$675 billion.

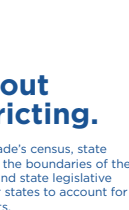
The distribution of more than \$675 billion in federal funds, grants, and support to states, counties, and communities are based on census data.

That money is spent on schools, hospitals, roads, public works, and other vital programs.




### It's about redistricting.

After each decade's census, state officials redraw the boundaries of the congressional and state legislative districts in their states to account for population shifts.



### Taking part is your civic duty.

Completing the census is mandatory: it's a way to participate in our democracy and say "I COUNT!"




### Census data are being used all around you.

Residents use the census to support community initiatives involving legislation, quality-of-life, and consumer advocacy.

Local governments use the census for public safety and emergency preparedness.

Businesses use census data to decide where to build factories, offices, and stores, which create jobs.

Real estate developers use the census to build new homes and revitalize old neighborhoods.




### Your privacy is protected.

It's against the law for the Census Bureau to publicly release your responses in any way that could identify you or your household.

By law, your responses cannot be used against you and can only be used to produce statistics.

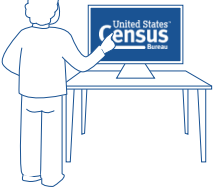
2020 will be easier than ever.

In 2020, you will be able to respond to the census online.



### You can help.

You are the expert—we need your ideas on the best way to make sure everyone in your community gets counted.



United States®  
**Census**  
Bureau

FIND OUT HOW TO HELP AT  
[2020CENSUS.GOV/PARTNERS](https://2020census.gov/partners)

United States®  
**Census**  
2020

## Black Hills Electric Association organized at Hill City



Forty-nine area people met at the Royal Pine Hotel in Hill City on January 17, 1940, to discuss bringing central station power to the central Black Hills. Fred Root, a rancher who lived between Hill City and Keystone, organized the meeting. The above photo, circa 1940, shows Hill City's main street from the north end looking south. Deerfield road is coming in from the right. The large building on the right was a theater at that time. It is currently the Black Hills Institute of Geological Research.

## The challenges of a fledgling co-op

At the May 8, 1945 regular monthly board meeting, the board authorized Henry Barnes to hire Maxine Avery at a wage scale of not to exceed 60 cents an hour for hours actually worked for the project.

At the June 1, 1945 meeting, the following bills were paid:

Chronicle Shop – \$13.05  
Dakota Typewriter – \$51.48  
Shap Ads – \$21.42  
Coordinator's Salary – \$200  
Coordinator's mileage – \$42.55  
Postage – \$3  
Maxine Avery's salary – \$65.70  
Telephone bill – \$0.48  
Betty Gould, stenographic work – \$10.45

The board also protested in a letter to Black Hills Power and Light the fact that BHP&L was constructing power lines in the association's territory and inducing people who should be served by the association to sign up with Black Hills Power and Light. The board reminded the

investor-owned utility that the association was formed because the IOU would not serve rural people.

On July 2, 1945, J.B. French, president of the Black Hills Power and Light Company, and Tom Eastman, their attorney, appeared before the association board for the purpose of presenting the views of BHP&L in connection with conflicting interests between the two utilities and the proposed project of Black Hills Electric Association.

French proposed that time be taken for them to make a survey in which they might determine whether it would be practical for them (BHP&L) to serve all of the territory, which the association proposed to serve, on the same or better terms.

After the meeting with BHP&L, the association board decided that it would be unwise to delay the project any further,



Spite lines were power lines built by a competing utilities to try to take away potential customers.

it being the consensus of opinion that the only practical solution was to proceed as rapidly as possible toward getting the lines under construction.

It was directed that a letter be written to the Black Hills Power and Light Company setting forth the views of the Black Hills Electric Association, Inc. board.

## Promoting electricity and electric heat



Promoting safe, reliable electricity was the job of every employee at the cooperative. The above photo shows two enthusiastic co-op employees showing the advantages of electric heat at the 1961 home show in Hot Springs. The display to the left shows two types of home breaker panels. The milk house heater in the center is still produced today.

## The struggle to purchase power

By November of 1945, Black Hills Electric Association had a contract with Rapid Electric Company of Rapid City for the construction of 216 miles of distribution lines, including transformers, right-of-way clearing and pole inspections.

A letter was mailed to all members telling them that the contracts had been approved and ranch wiring would be started soon. The letter also promoted loans available for home wiring and upcoming community information meetings.

In January of 1946, Henry Barnes, project

coordinator, met with representatives of Black Hills Power and Light to discuss purchasing power from them.

Barnes reported back to his board that BHP&L refused to enter into a contract with the association unless a division of territory to be served by each could be agreed upon.

Later in January at a special meeting of the board, a resolution was approved to immediately apply for Rural Electrification Administration funds necessary for the construction of a permanent generation

facility and to apply for portable generators to be used until the power plant could be built.

At the association's February, 1946 meeting, BHP&L submitted a new power contract, which was approved by the association's board.

At its June, 1946 meeting, the board purchased Lot 12, Block 10 in Pringle for \$25 to construct the Pringle Substation.

On July 20, 1946, the line from Custer to Pringle was energized and the first 30 rural members began receiving electricity.

# Boots, Broncs and Safety

## Electric Safety Remains a Tradition at Black Hills Stock Show®

Courtney J. Deinert

courtneyd@centralec.coop

**“We’re just selling safety.”**

During the first week of February, people from across the region pull on their boots and gather in Rapid City, S.D., to celebrate the area’s deep history of cattle ranching at the Black Hills Stock Show.

The Black Hills Stock Show is the second largest event in the state, after the Sturgis Motorcycle Rally.

On the vendor floor, you can find anything a cowboy or cowgirl would dream of. Among the leather boots, hides, saddles and hats for sale, you can also find the Touchstone Energy® Cooperatives of South Dakota booth.

“We’re just selling safety,” said Todd Eliason, assistant general manager at Rushmore Electric Power Cooperative in Rapid City, S.D. “We’ve been doing this for more than 20 years.”

The booth features a tabletop safety demonstration, also known as “Neon Leon” or “Power Town.” The table demonstration features a model farmyard with a barn, house, overhead power lines, ground transformer and props such as tree branches, a ladder, backhoe and line down on a tractor.

With the step of a pedal, the operator can conduct electricity through the lines and produce a shock or arch with the props.



With the step of a pedal, Central Electric’s Pat Soukup illustrates the effects of electricity when contacting a power line.

The presentation is designed to educate elementary-aged children about the dangers of electricity, but all ages gather to see the demonstration.

As parents and grandparents pass by the booth, they’ll smile and nod, likely remembering the presentation from their earlier days. Parents with young cowboys and cowgirls along will nudge them towards the booth to hear about the importance of respecting electricity on the farm.

Eliason recalls working at the safety booth one year and a young boy pointed at him and yelled, “That’s him!”

Eliason admits that his first thought was, “Oh, no. What did I do?”

However, the mother approached him in tears, gave him a big hug and said, “My son hit a power line with a tractor, and



“Neon Leon” and “Lightning Liz” illustrate how electrocution can occur when approaching a tractor with a downed power line on it.



The demonstration is designed for elementary-aged children but draws crowds of all ages.

because he saw your presentation, he knew to stay in the tractor. He is here today because of you.”

Many cooperative representatives across the state can share similar stories where children, farm wives and equipment operators knew exactly what to do in a dangerous situation involving electricity because they saw one of the cooperative’s electric safety presentations.

“When watching the demonstration, the kids probably don’t understand everything right away,” says Patrick Soukup, manager of member services/marketing at Central Electric Cooperative in Mitchell, S.D. “But it might get them asking questions about electricity and they’ll go look it up or bring it up in conversation.”

Kids rarely leave the booth empty-handed. Attendees can count on taking home a souvenir including pencils, rulers, band-aids, plastic hardhats, stickers and a variety of different hand-outs to remind them about the presentation.

Representatives from the electric cooperatives from across South Dakota take turns operating the demonstration at the booth.

During the Stock Show, the electric cooperatives also facilitate the high voltage

trailer demonstration held Thursday evening in conjunction with the sheep dog trials and mutton busting.

In addition to the Stock Show, the Touchstone Energy® Cooperatives of South Dakota provide energy efficiency and safety education at other events across the state, including the South Dakota State Fair and Dakotafest. You can also likely find them at your local home and farm shows, town festival, school

events and more.

To request a safety demonstration in your community, contact your local electric cooperative.



A young girl at the booth gets a closer look at overhead and underground conductor samples.



## Ranch Rodeo Events

One of the most popular events at the Black Hills Stock Show is the Ranch Rodeo. Teams from a five-state region compete for more than \$21,000 in cash and prizes.

Preliminary and final events represent real-life chores on the ranch and provide unique entertainment.

- **Steer Loadin’**  
Teams must sort and load a steer into the trailer and shut and latch the trailer.
- **Range Doctorin’**  
Teams must head and heel a cow, lay it on its rib cage, “doctor it” on the neck with medicine on a paint stick and remove the ropes.
- **Stray Gatherin’**  
Teams must head and heel a steer and tie any three legs.
- **Blake’s Trailer Loading**  
Teams will have trailers loaded with horses in the arena. They must unload their horses, rope two steers and load them into the trailer.
- **Rope, Mug and Tie**  
Teams must lay and tie down a designated steer.
- **Head, Heel and Brand**  
Teams must head and heel two steers, lay each on its side, and brand them.
- **Pendleton Ranch Bronc Ride**  
A team member must ride a bronc for 8-seconds and can hang on with both hands if desired.



East River Electric employees work the serving line at a previous feed. Pictured, from left, are Mike Jaspers, Business Development Director; Paul Lambert, radio, SCADA and LM foreman; Rory Johannsen, materials coordinator operator; Tom Boyko, CEO/General Manager and Kim Boyko.

# FEEDING FOR A CAUSE

## East River Electric to Hold 56th Annual Mountain Oyster Feed March 12

**Shayla Ebsen**

sebsen@eastriver.coop

Mountain oysters will be the center attraction at a fundraising event held by East River Electric Power Cooperative on March 12.

Serving for the 56th annual Mountain Oyster Feed begins at 5:30 p.m. at Nicky's on the west edge of Madison, S.D.

But for those not so interested in the prairie delicacy, the event's menu will also include pork sandwiches, baked beans, coleslaw and dessert. There will be a raffle, door prizes, silent auction and 50-50 tickets.

Proceeds from the event will once again benefit LifeScape, formerly Children's Care Hospital and School and SD Achieve, whose mission it is to empower children and adults with disabilities to lead fulfilling lives. With more than \$275,000 contributed to LifeScape over the years, East River's Annual Mountain Oyster Feed has helped provide for the very best in medical care, therapy, education and other services for the children at LifeScape.

"LifeScape is so honored to benefit from this tremendous event each year. It is so fun and so



Marshall Area Foreman Colton Sanderson and Journeyman Radio and SCADA Technician Tyler Frost are all smiles as they work in the kitchen at a past feed.

unique, and it brings the community together in fellowship and food, but more importantly, it brings the community together in support of children with disabilities. The money raised over the years has made a significant impact on the lives of hundreds of Madison-area children and their families supported by LifeScape,” said Jessica Wells, LifeScape Foundation president. “This is a tradition we love and look forward to each year. We are so grateful for this event and for the people of this community that show their compassion and care by coming out in support of this each year.”

The partnership began about a dozen years after Children’s Care Hospital & School opened in 1952.

According to the history of the organization on LifeScape’s website, the school was a private, nonprofit organization started as a citizens’ grassroots effort to provide rehabilitation and education to children recovering from polio. Until then, children often never returned to school after recovering from the acute phase of their illness, as buildings were seldom accessible. As the polio threat waned, children with other disabilities were admitted, but the early mission of the organization was to serve children with physical disabilities only. More children were “mainstreamed” into public schools in the 1970s

and Crippled Children’s began serving children with more complex disabilities – the result of modern medicine’s ability to save sicker and more premature babies. Also in the 1970s, the organization began serving children in their own communities through the outreach program. The organization acquired an outpatient center in Rapid City in 1985 and was able to provide services throughout the state. The name changed to Children’s Care Hospital & School in 1994 and an outpatient rehabilitation center opened in Sioux Falls in 1999, serving children and adults. In 2012, Children’s Care celebrated its 60th anniversary.

“Every year, the East River Employees’ Committee seeks out donations of any kind and every year the community steps up in supporting our cause and making this event a success,” said Sam Anderson, East River Employees’ Committee chairperson. “East River takes pride in our community and is committed to benefiting non-profits in our area such as LifeScape.”

“The charity event was very successful and a direct tribute to our employees fulfilling

EAST RIVER ELECTRIC POWER COOPERATIVE  
**MOUNTAIN OYSTER  
FUNDRAISER**  
SERVING LIFESCAPE

03.12.20 THURSDAY | NICKY'S RESTAURANT | 5:30 P.M. SERVING BEGINS

PROCEEDS BENEFIT LifeScape

our Touchstone Energy® Cooperatives principle of Commitment to Community,” said East River General Manager Tom Boyko after the 2019 event, which saw the East River Employees Committee donate \$1,000, a total matched by East River Electric at \$1,000 and CoBank also contributed \$2,000. In total, the 2019 event raised more than \$25,000 for LifeScape.



Apprentice Substation Technician Tim Fuerst, Facilities Maintenance Technician Mark Even and Mechanic Terry Zingmark prep the mountain oysters for frying.

---

**December 15-March 31**

South Dakota snowmobile trails season, Lead, SD, 605-584-3896

---

**February 20-25**

Black Hills Film Festival, Various times and locations, Hill City, SD, 605-574-2368

---

**February 21**

KORN and Breaking Benjamin, Rapid City, SD, 605-394-4111

---

**February 22**

Cabin Fever Games, Yankton, SD, 605-665-8994

---

**February 22-23**

48th Annual Farm, Home & Sports Show, Ramkota Hotel, Pierre, SD 605-224-1240

---

**February 26**

The Harlem Globetrotters, Rapid City, SD, 605-394-4111

---

**February 27-29**

SD High School State Wrestling Tournament, All Classes, Sioux Falls, SD, 605-224-9261

---

**February 27-March 1**

35th Annual SD State Dart Tournament, Rapid City, SD, 605-394-4111

---

**February 29**

Custer Trade Show, 9 a.m. to 4 p.m., Custer Elementary School, Custer, SD, 605-673-2244

---

**March 6**

Rockerville Bingo Supper, Meal at 5:30 p.m., Bingo at 6 p.m., Rockerville Community Center, Rockerville, SD

---

**March 10**

Moon Hike, 6 to 8 p.m., Tatanka Barn Game Lodge Campground, Custer State Park, SD, 605-673-2244



**February 20-25: Black Hills Film Festival, Hill City, SD, 605-574-9454**

Photo courtesy: travelouthdakota.com

---

**March 12-14**

SD State B High School Girls Basketball Tournament, Spearfish, SD, 605-224-9261

---

**March 14**

28 Below Fatbike Race, Ride and Tour, Lead, SD, 605-641-4963

---

**March 14**

Custer Search & Rescue Rocky Mountain Oyster Feed, 5 p.m., Laughing Water Restaurant Crazy Horse Memorial, Custer, SD, 605-431-4097

---

**March 14-15**

Gun Show, Mitchell, SD, 701-361-9215

---

**March 18, June 11, August 13 and October 8**

Kids Mystery Dinner Theater, Brookings, SD, 605-692-6700

---

**March 19-21**

SD State A High School Boys and Girls Basketball Tournament, Rushmore Plaza Civic Center, Rapid City, SD, 605-224-9261

---

**March 19-21**

SD State AA High School Boys and Girls Basketball Tournament, Sioux Falls, SD, 605-224-9261

---

**March 19-21**

SD State B High School Boys Basketball Tournament, Aberdeen, SD, 605-224-9261

---

**March 20-21, 27-28**

Annual Schmeckfest, Freeman, SD, 605-925-4237

---

**March 21-22**

Hill City Antiques and Railroad Show and Sale, 9 a.m. to 5 p.m. Saturday, 10 a.m. to 3 p.m. Sunday, Hill City High School, Hill City, SD, 605-877-6629

---

**March 21-22**

Gun Show, Codington County Ag Building, Watertown, SD, 701-361-9215

---

**March 27**

Rochford Area Meeting, 6-7 p.m. Rochford Community Center, Rochford, SD, 605-673-4461

---

**April 4-5**

Annual USD Wacipi, Vermillion, SD

---

**April 11**

Eggstravaganza, Rapid City, SD, 605-716-7979

---

**April 17**

Hermosa American Legion Auxiliary Pulled Pork Dinner and Bingo, 4:30 to 6:45 p.m. meal, bingo at 7 p.m., American Legion Hall, Hermosa, SD, 605-255-5977

**To have your event listed on this page, send complete information, including date, event, place and contact to your local electric cooperative. Include your name, address and daytime telephone number. Information must be submitted at least eight weeks prior to your event. Please call ahead to confirm date, time and location of event.**